

Prefab Eco Kit 105 m²

Easy unpacking and assembly!

Basic model



HONE



ONE



FRANC ONE



PHONE



Specifications

The house has a surface area of 105 m², a gutter height of 2.44 m and an interior ceiling height of 2.4 m.

The house type is 2 bedrooms, 2 living rooms, 1 kitchen and 1 bathroom.

The home's structure uses an integrated modular wall + steel frame + lightweight steel roof, so customers only need to install the decorative finishes on the interior and exterior walls on site.

Loading specification:

- Wind load: 250 km/h (calculated on 5S wind speed)
- Snow load: 0.00 KN/M2
- Dead roof load: 0.30 KN/M2
- Live roof load: 0.50 KN/M2

ALIBABA FRANCOPHONE

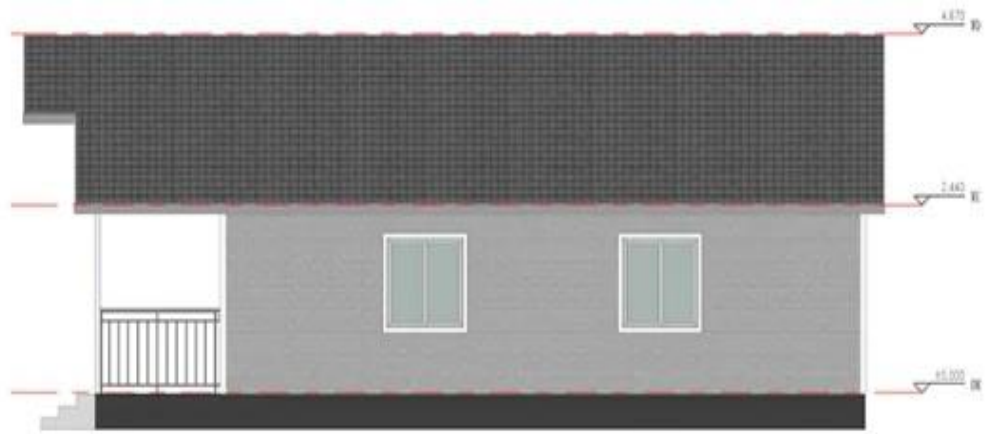
House specification:

1. Frame: the wall system uses an integrated modular wall + steel structure, the roof system uses a lightweight steel roof.
2. Roof: linoleum tile + 3 mm SBS waterproof membrane + airtight film. Roof insulation uses 100 mm glass wool + aluminum foil.
3. Wall: modular wall (9 mm double-sided OSB panel, filled with fire-retardant real gold panel), and interior wall uses bamboo fiber panel (canvas pattern), bathroom wall uses waterproof cladding + waterproof bamboo fiber panel (marble pattern). The exterior wall uses 27 mm gold plate (installed on site).
4. Flooring: the bathroom floor uses ceramic tiles, the living room uses SPC flooring. These can be replaced by other materials.
5. Electricity: optional, standard is CE.
6. Sanitary fittings: 1 ceramic toilet seat, 1 shower, 1 washbasin and 1 glass shower screen.
7. Kitchen configuration: L-floor cupboard (2600-1800) * 600 mm, stainless steel sink and tap.

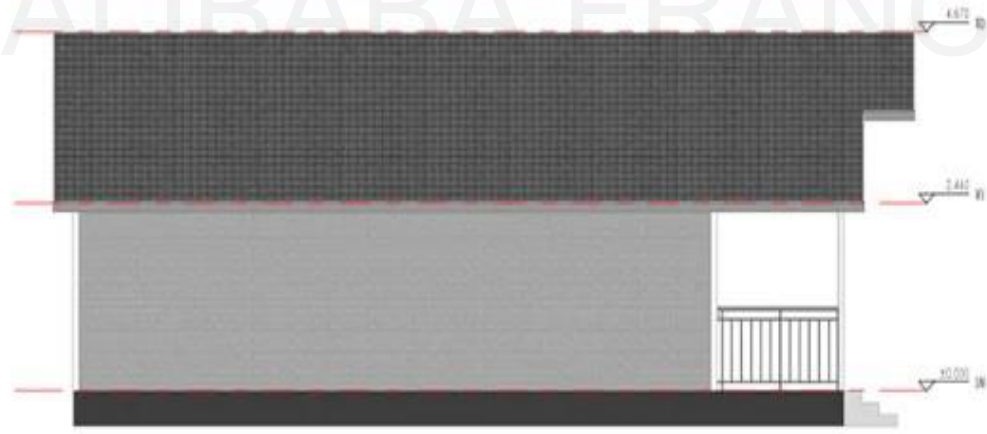
Plans



ALIBABA FRANCOPHONE

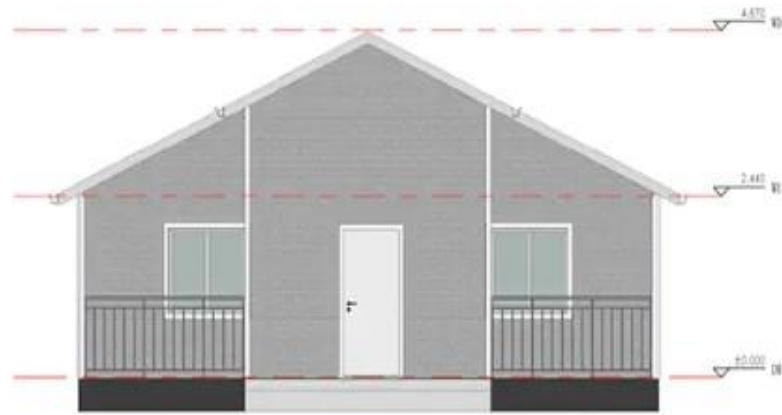


EAST ELEVATION

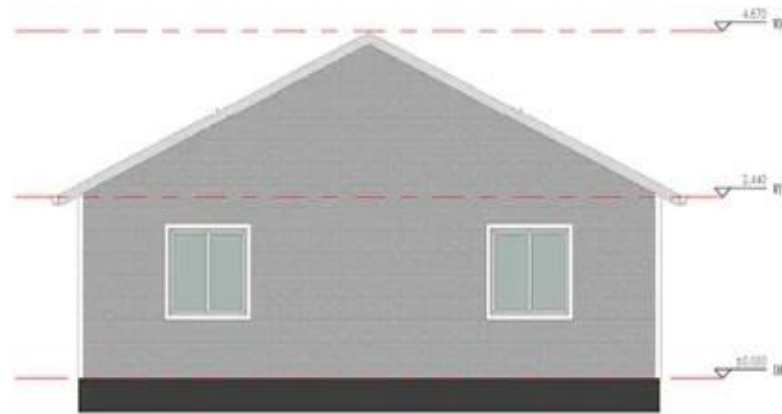


WEST ELEVATION

ALIBABA FRANCOPHONE



SOUTH ELEVATION



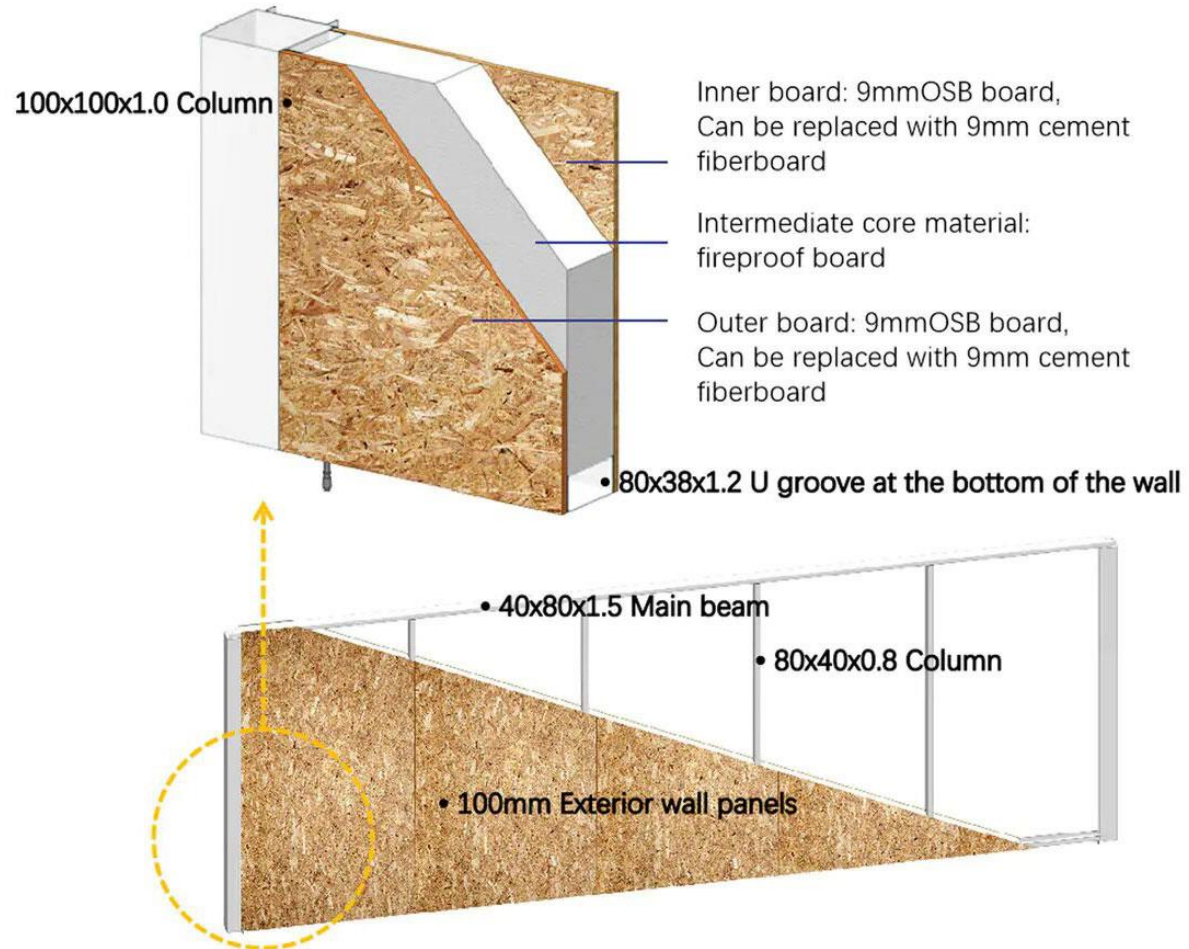
NORTH ELEVATION

ALIBABA FRANCOPHONE

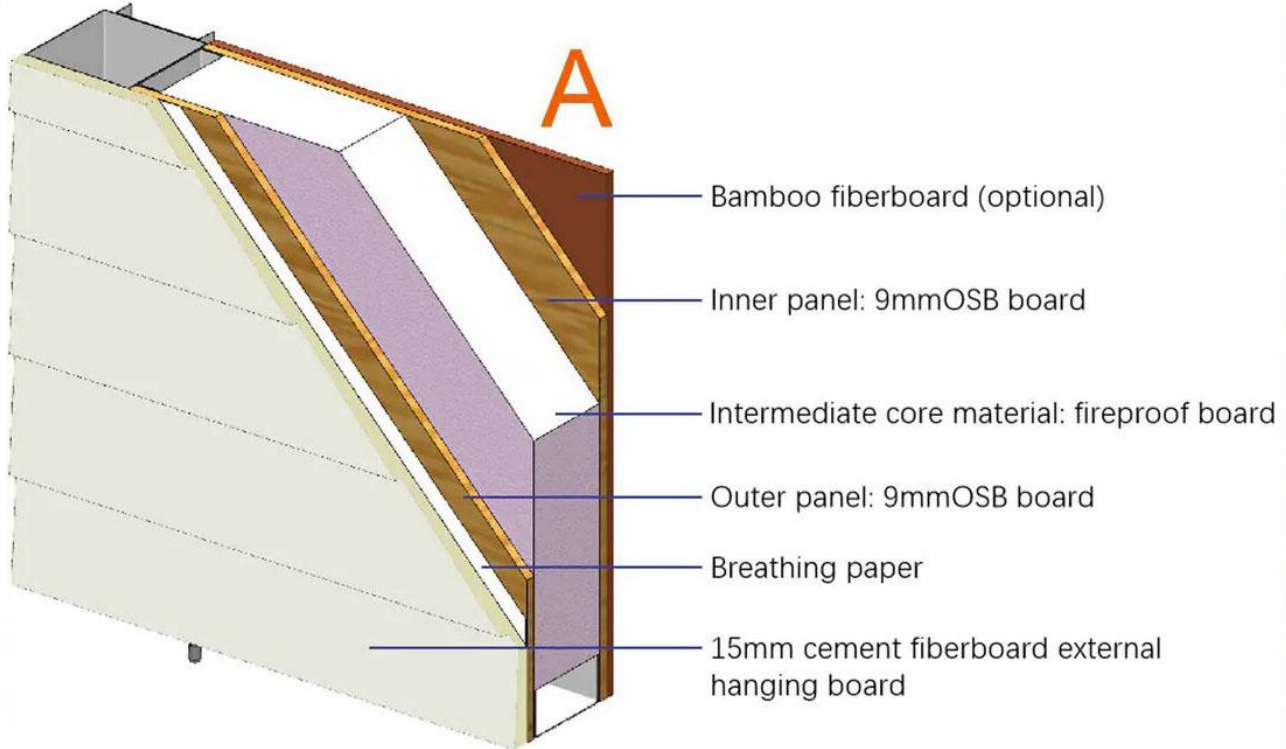
Specifications

WALL SYSTEM

Frame structure: frame + shear plate

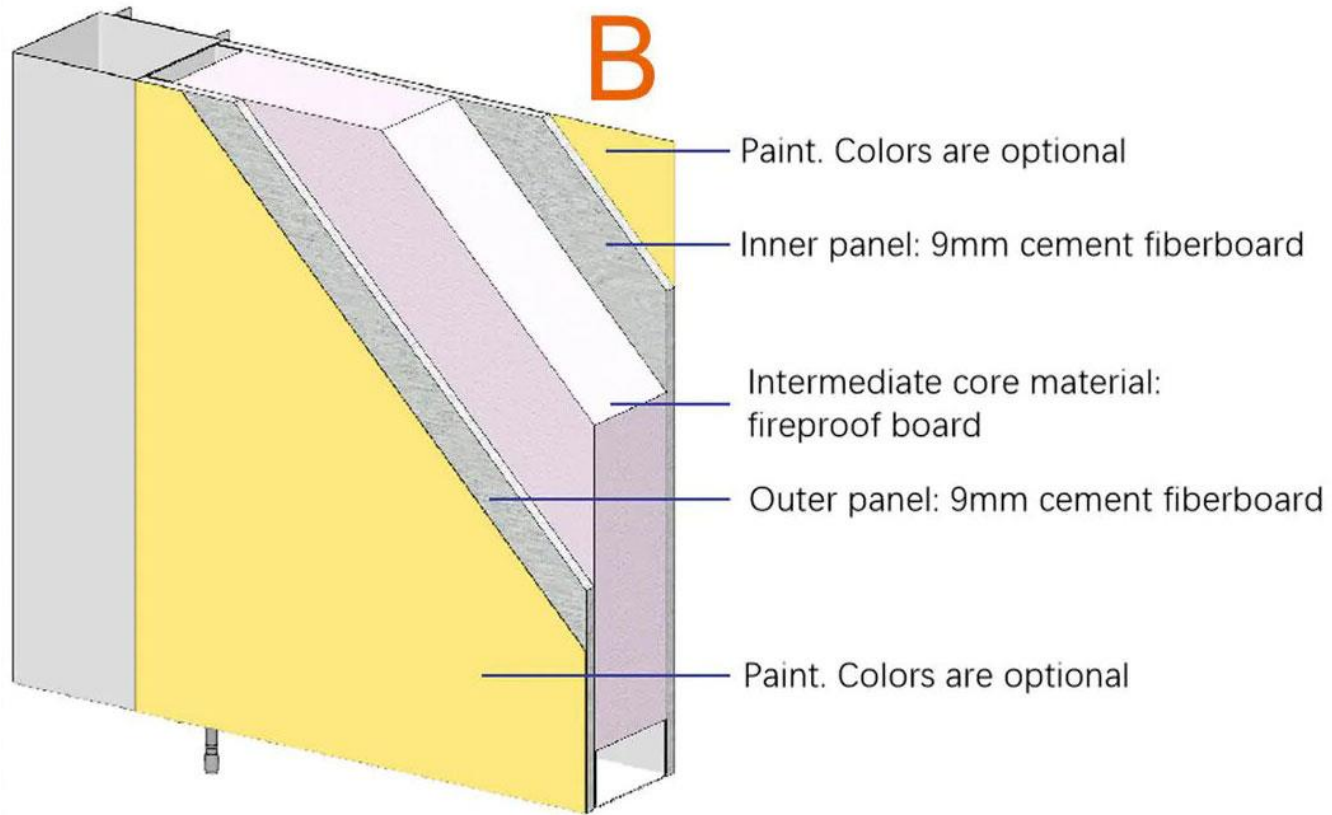


With Optional Materials

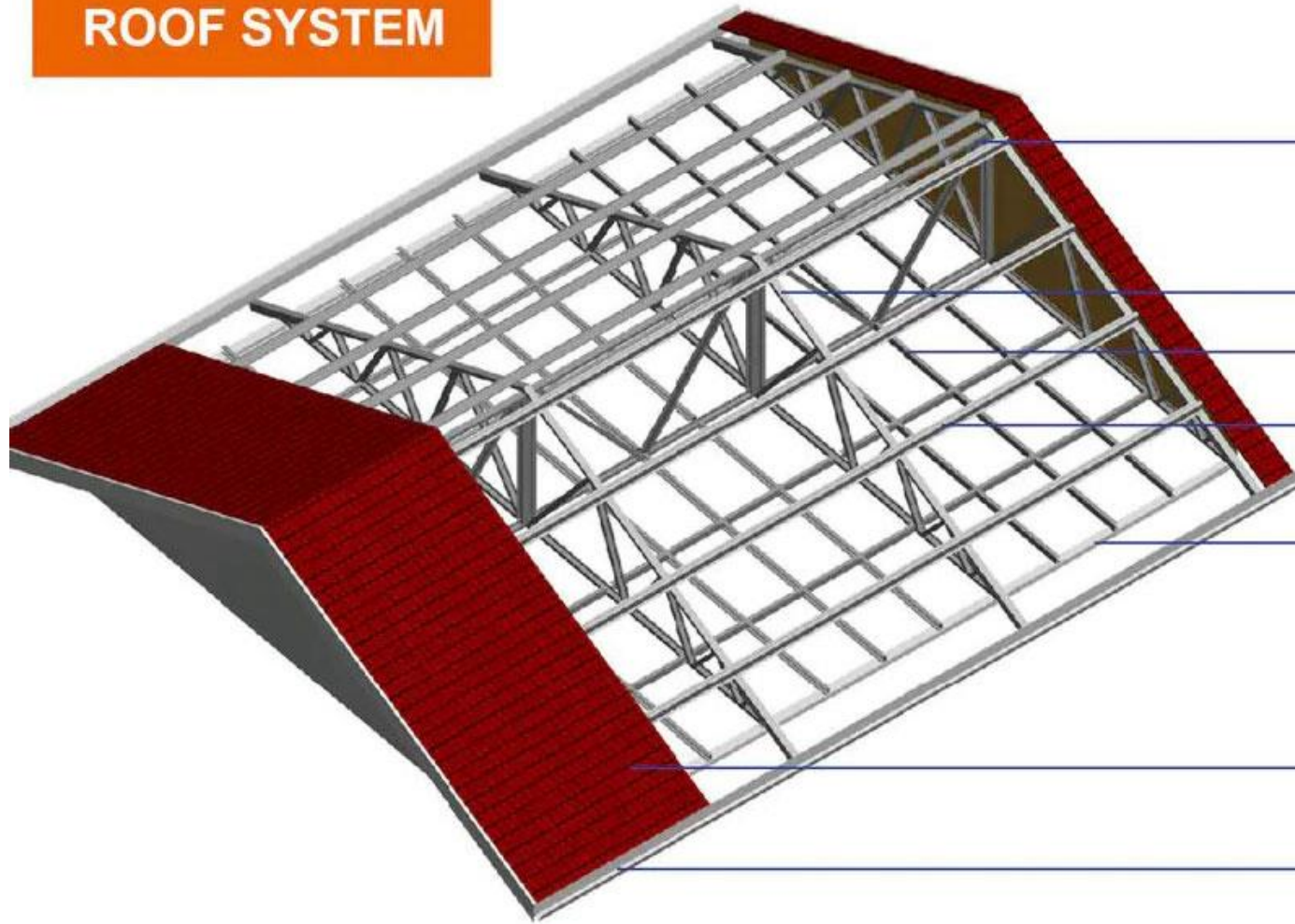


Note: The interior wall of the bathroom is made of waterproof coating + waterproof bamboo fiberboard (marble pattern)





ROOF SYSTEM



70 series roof truss

70 series roof truss

70 series ceiling keel

Roof purlin

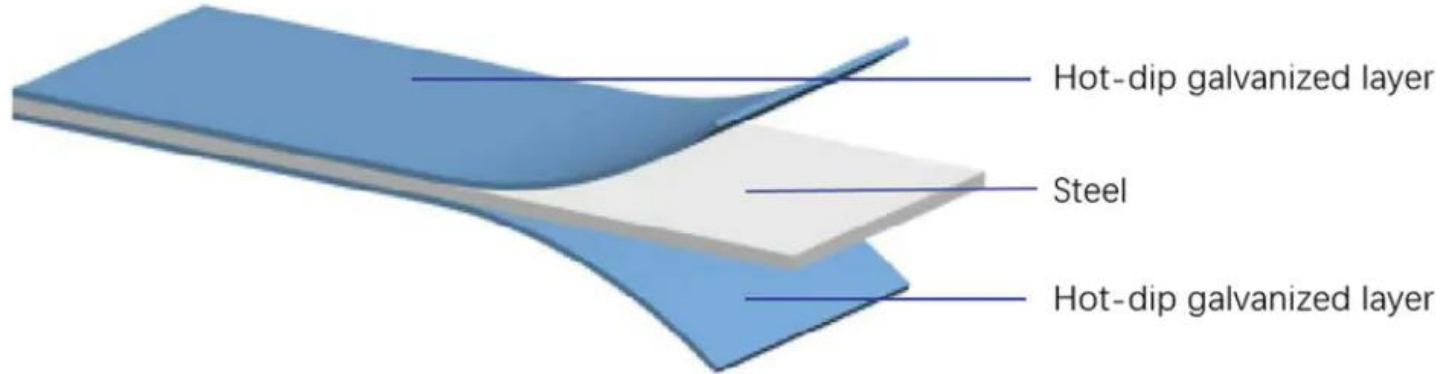
80x40x1.5 Main beam

Roof truss mountain wall:
9mm OSB board/9mm
cement fiber board

780mm type large
corrugated board

PVC ditch

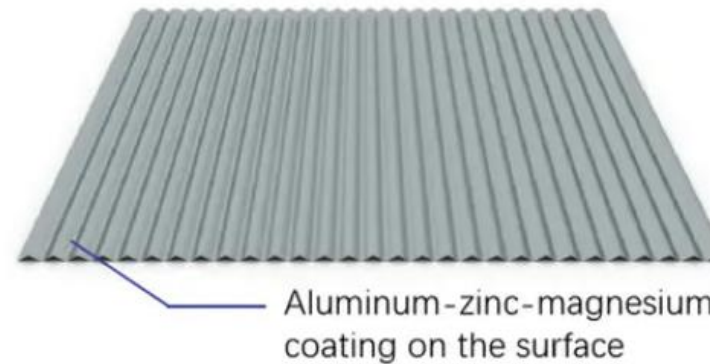
Hot-dip galvanized steel



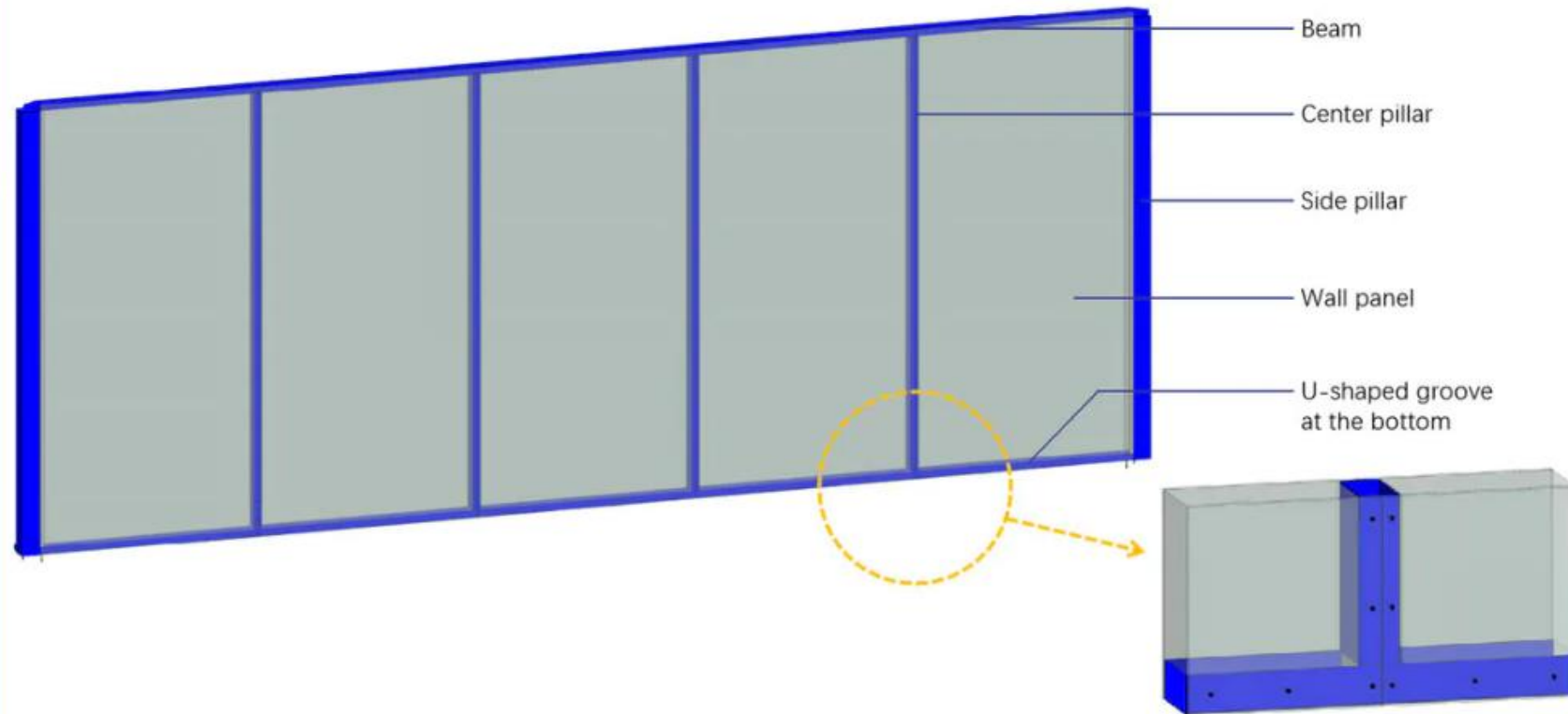
The overall frame of the building is galvanized and sprayed: the hot-dip galvanized coating is even, the adhesion is strong, and the anti-corrosion effect and service life are the best of all methods.

The surface of the roof color steel plate is coated with 150g/m² of aluminum-zinc-magnesium layer, sprayed with 25um powder and 5um paint after plating.

Roof color steel plate



Excellent Structural Strength



The lower house structure of the building adopts steel frame + shear plate, and the columns and beams, wall panels and frame are all connected into a whole, which has excellent overall structural strength.

Easy to install



This product is one of the apartment types of the economic villa series under the PrefabX brand created by PTH. All components are produced by the factory automation and standardization.

The installation process requires low level of professional technology and does not require the assistance of large-scale machinery and equipment. Customers can carry out DIY installation through the equipped installation drawings and enjoy the fun of building a house with their families.



House area:	148m ²
Eave height:	2.8m
Indoor net height:	2.7m
Anti Seismic:	Second level (9 degrees)
Wind-resistance:	200km/h (Level 16)
Wind load:	250~300km/h (calculated on 5S wind speed)

Snow load:	0.00 KN/M2
Roof dead load:	0.30 KN/M2
Roof live load:	0.50 KN/M2
Durability:	50 years
Loading:	40 ft HQ
other	

