

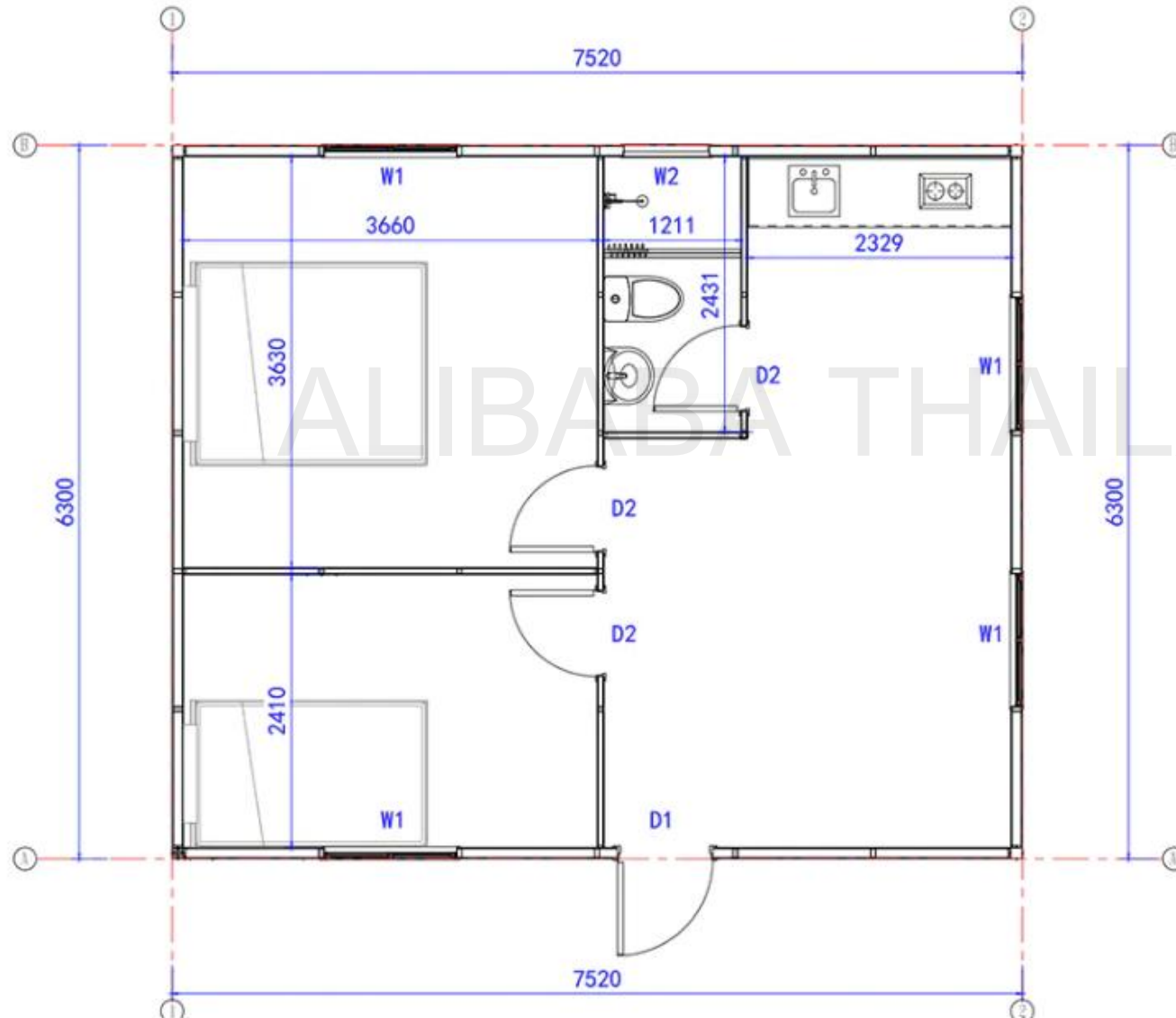
Anticyclonic Eco Kit 47 m²

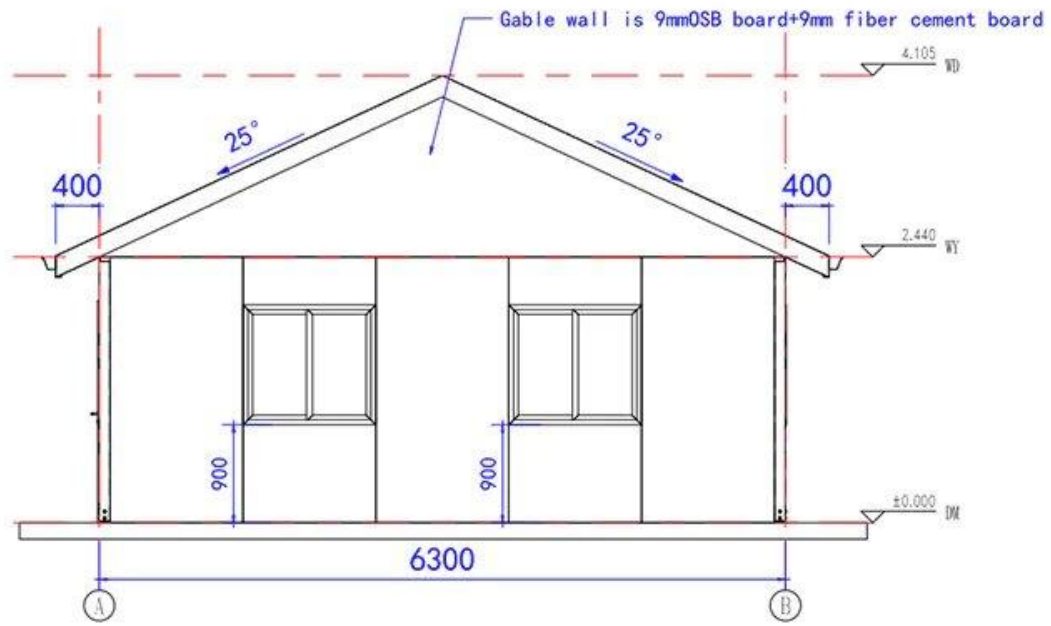
Easy unpacking and assembly!

Basic model

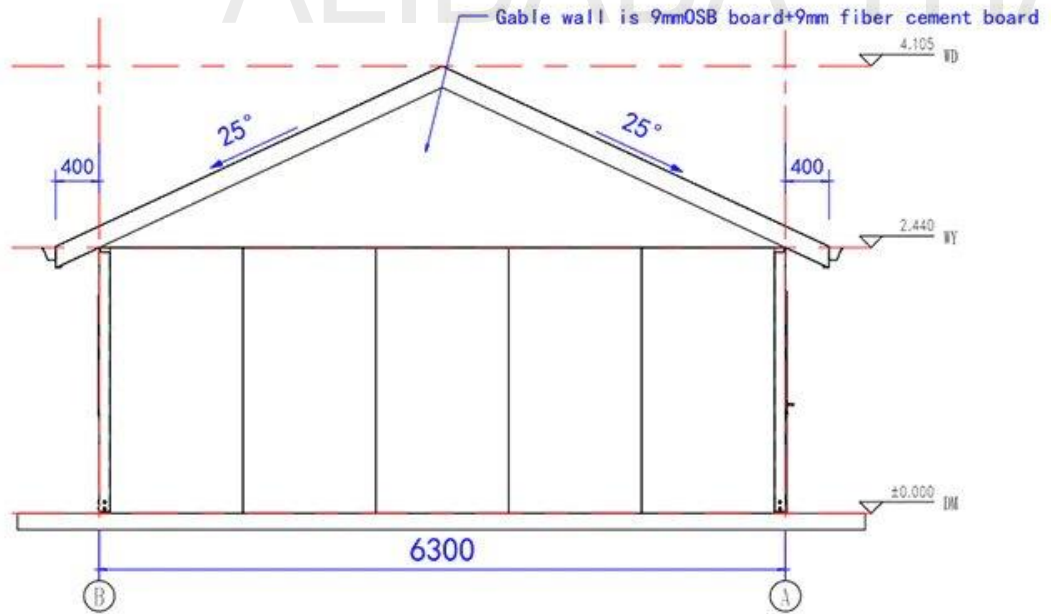


Plans



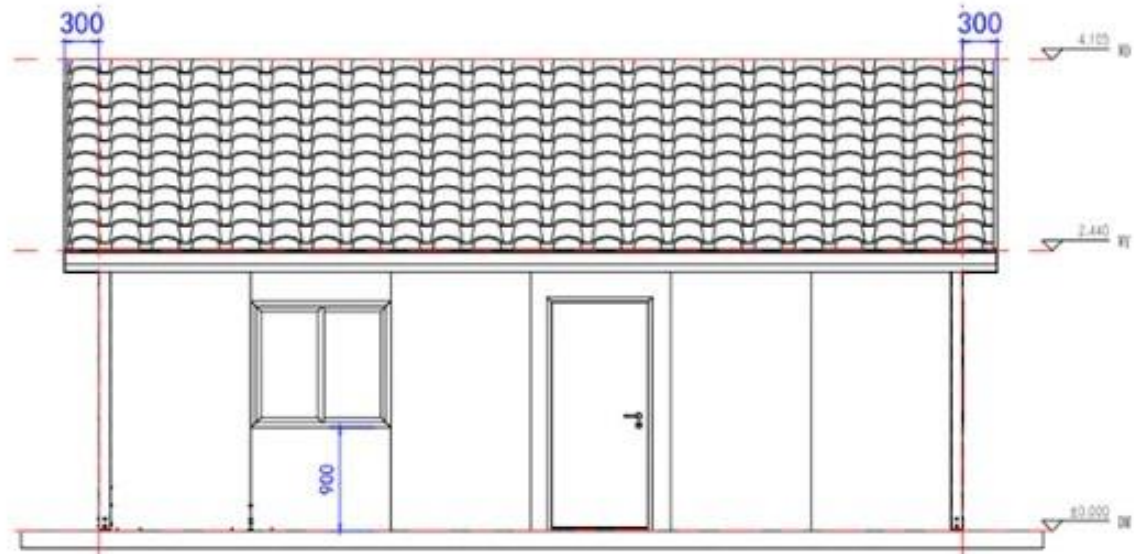


East view



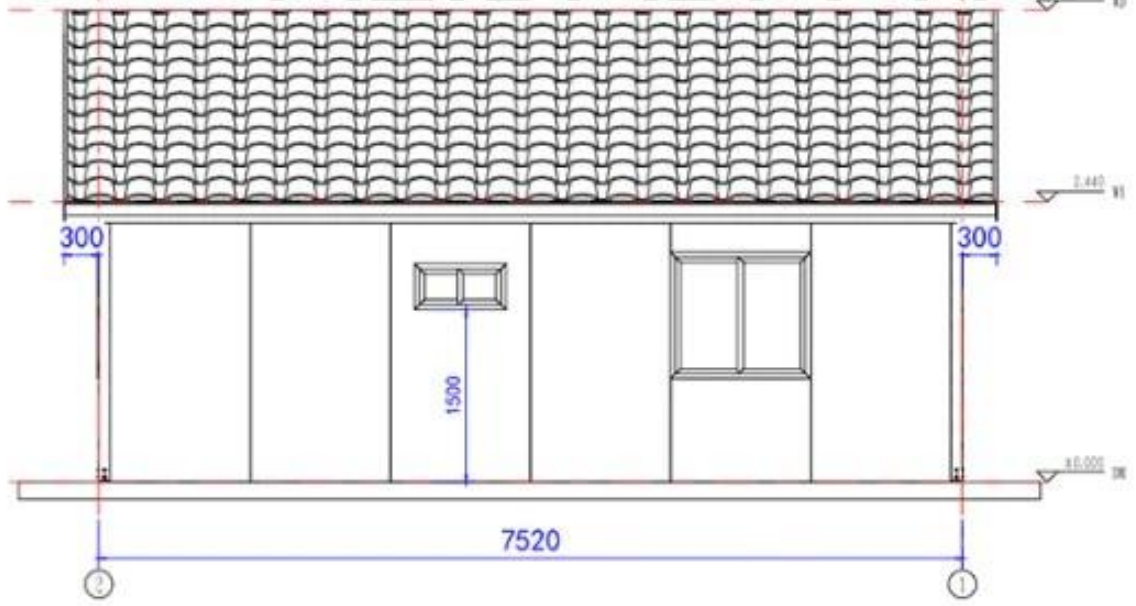
West View

ALIBABA THAILAND



7520

South view



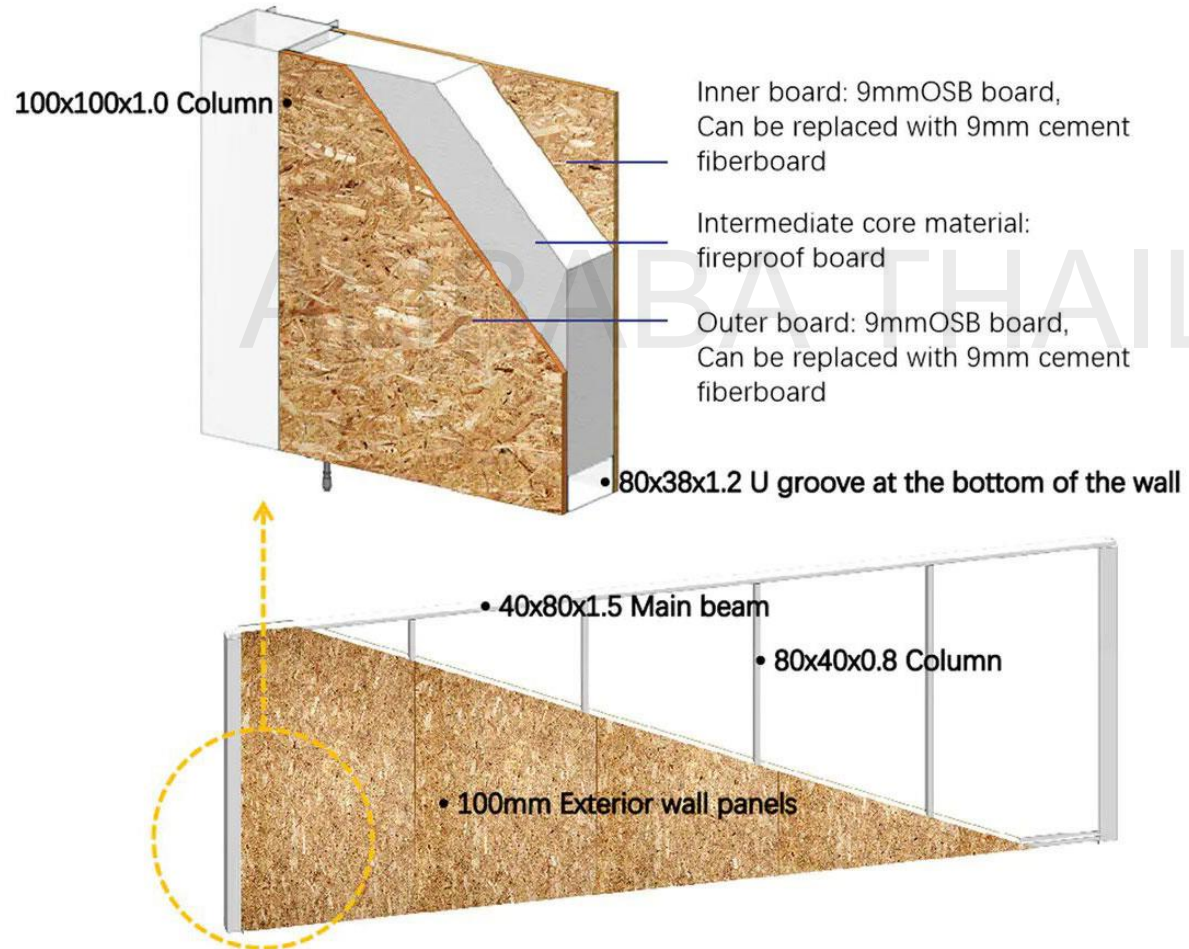
7520

North view

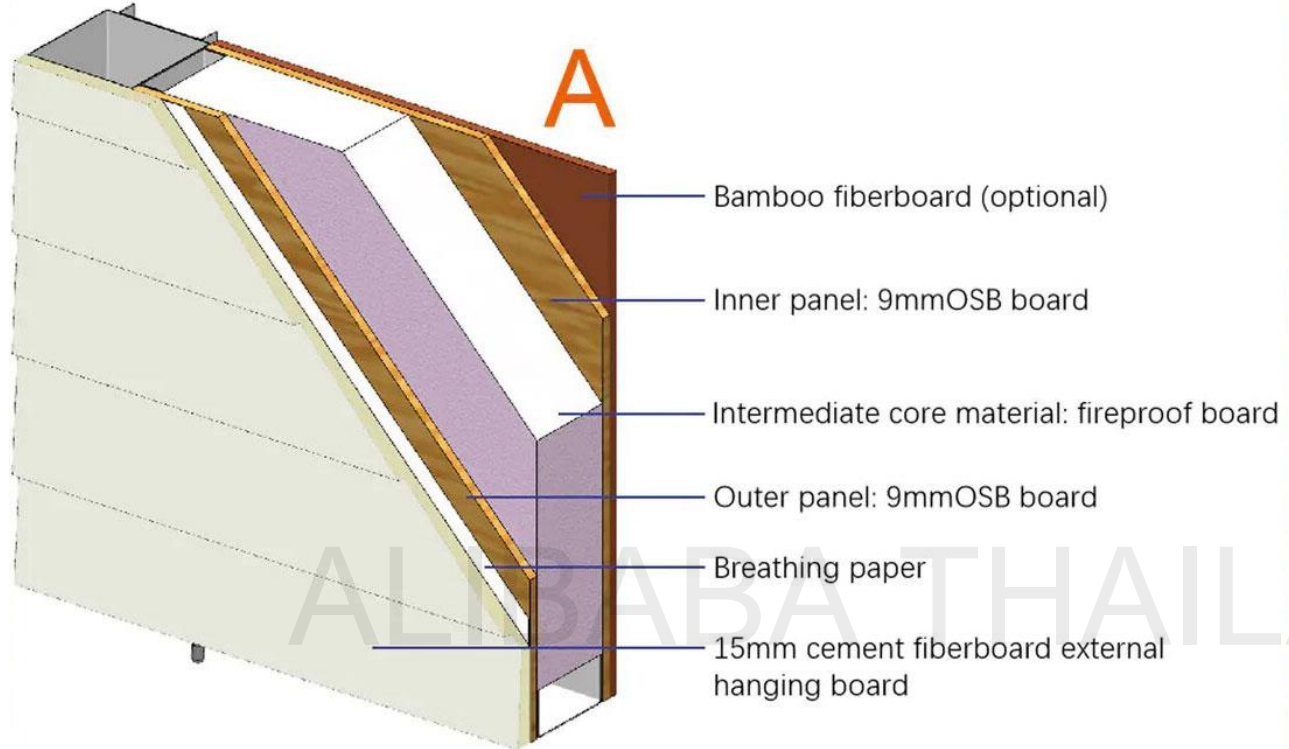
Specifications

WALL SYSTEM

Frame structure: frame + shear plate

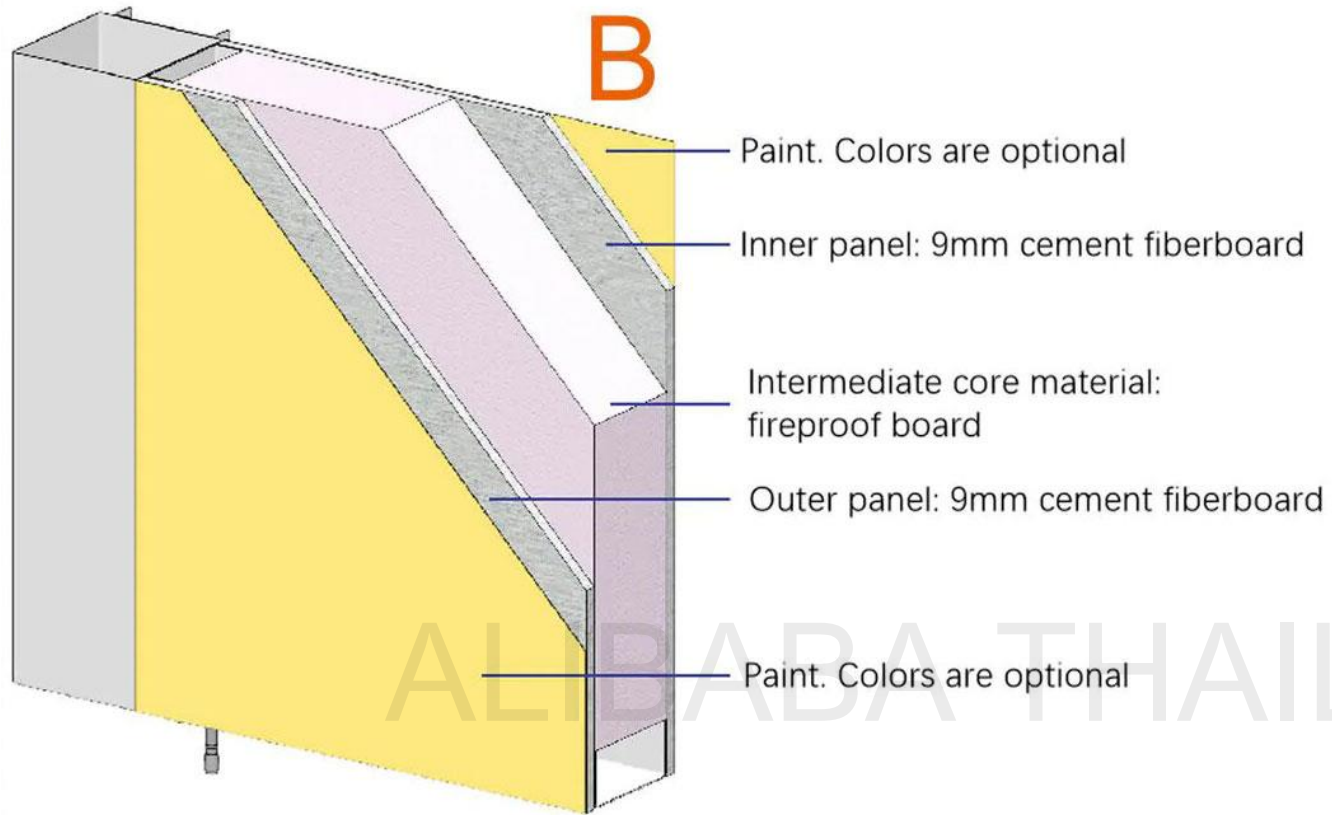


With Optional Materials



Note: The interior wall of the bathroom is made of waterproof coating + waterproof bamboo fiberboard (marble pattern)

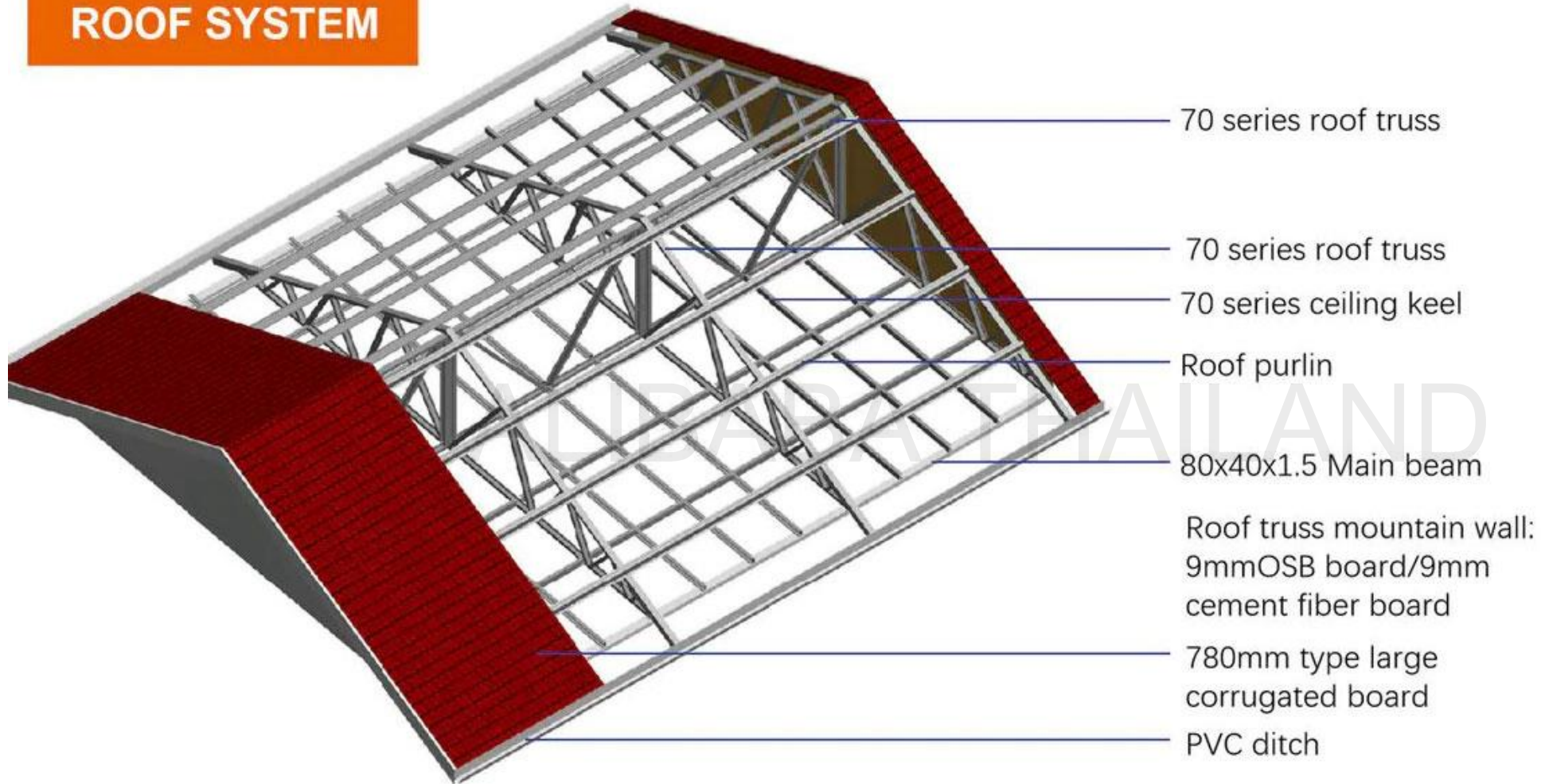




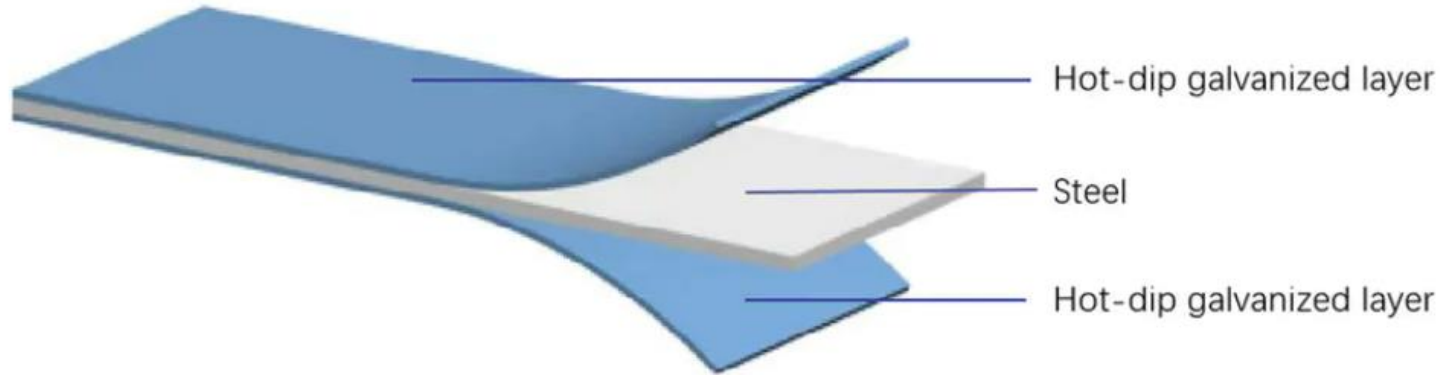
ALIPABA THAILAND



ROOF SYSTEM



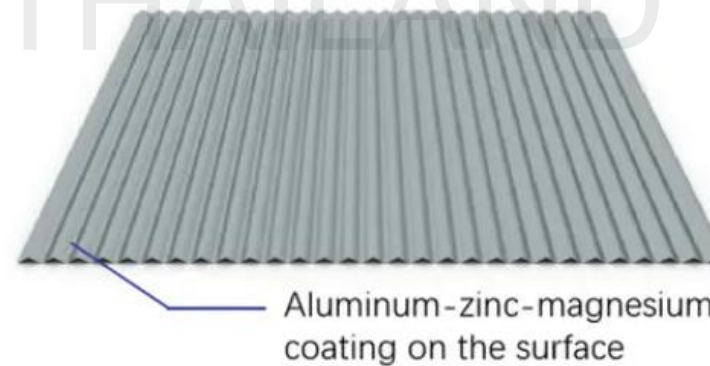
Hot-dip galvanized steel



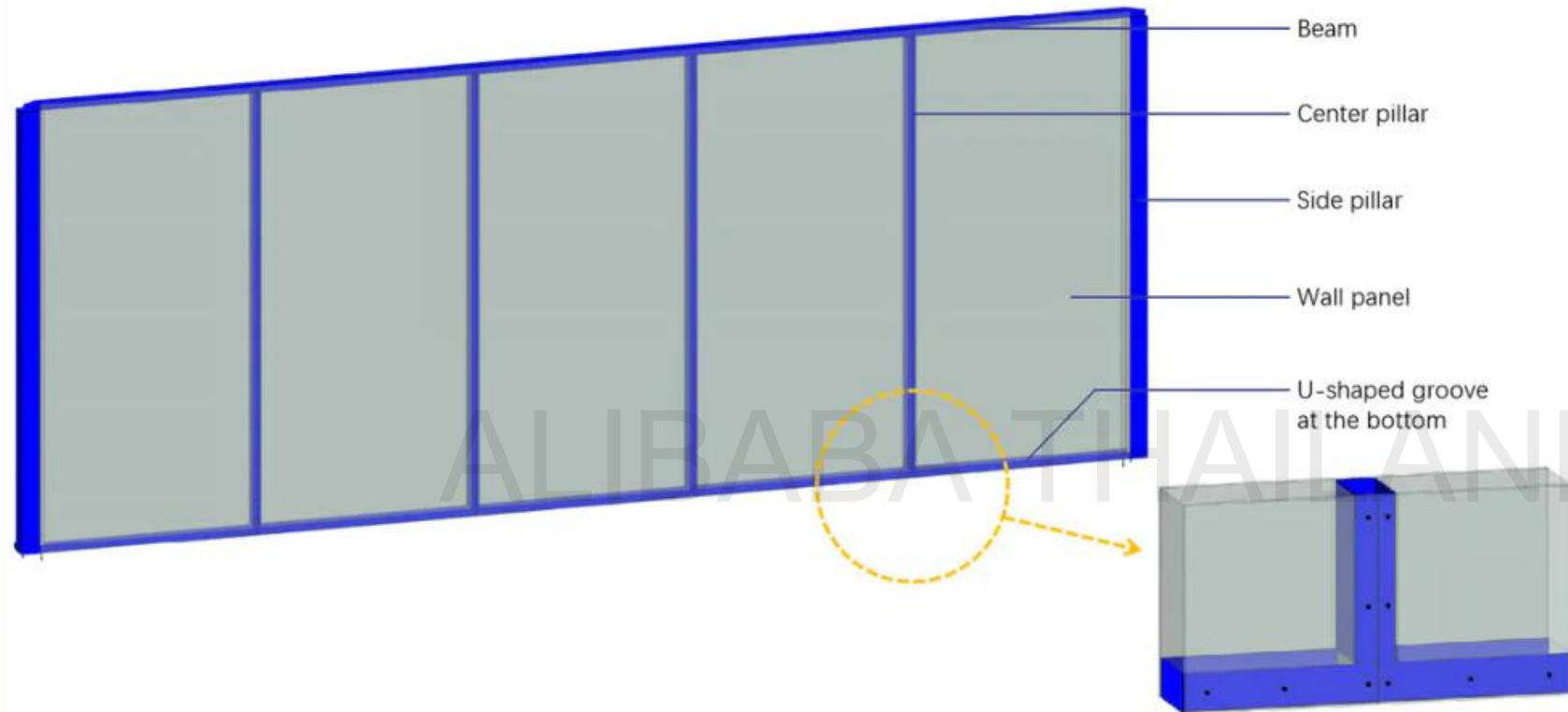
The overall frame of the building is galvanized and sprayed: the hot-dip galvanized coating is even, the adhesion is strong, and the anti-corrosion effect and service life are the best of all methods.

The surface of the roof color steel plate is coated with 150g/m² of aluminum-zinc-magnesium layer, sprayed with 25um powder and 5um paint after plating.

Roof color steel plate



Excellent Structural Strength



The lower house structure of the building adopts steel frame + shear plate, and the columns and beams, wall panels and frame are all connected into a whole, which has excellent overall structural strength.

Easy installation



This product is one of the apartment types of the economic villa series under the PrefabX brand created by PTH. All components are produced by the factory automation and standardization.

The installation process requires low level of professional technology and does not require the assistance of large-scale machinery and equipment. Customers can carry out DIY installation through the equipped installation drawings and enjoy the fun of building a house with their families.



Parameters

Ground Plan Dimension :	6300mm*7520mm	Roof dead load :	0.25 kN/m ²
Construction Area :	47.4m ²	Roof live load :	0.50kN/m ²
Indoor net height :	2.44m	Earthquake Resistance :	Level 8
Layout :	2 bedrooms, 2 living rooms, 1 kitchen, 1 bathroom	Sound insulation performance :	34.46dB
Snow Load :	0.5-1.5kN/m ²	Durability :	More than 30 years
Wind Load :	0.5-2.0kN/m ²	Load :	40HQ

